

Client: Oasis Labs
 support@myoasislabs.com
 www.myoasislabs.com

 Sample received: **07/28/25**
 Analysis conducted: **08/04/25**

Compound:	Retatrutide	CAS:	2381089-83-2
Batch/Lot #:	072425	Formula:	C221H342N46O68
Appearance:	White lyophilized powder	Mol Wt:	4845.444 g/mol

Method: Qualitative and Quantitative chemical analysis by Ultra High Performance Liquid Chromatography with Mass Spectrometry

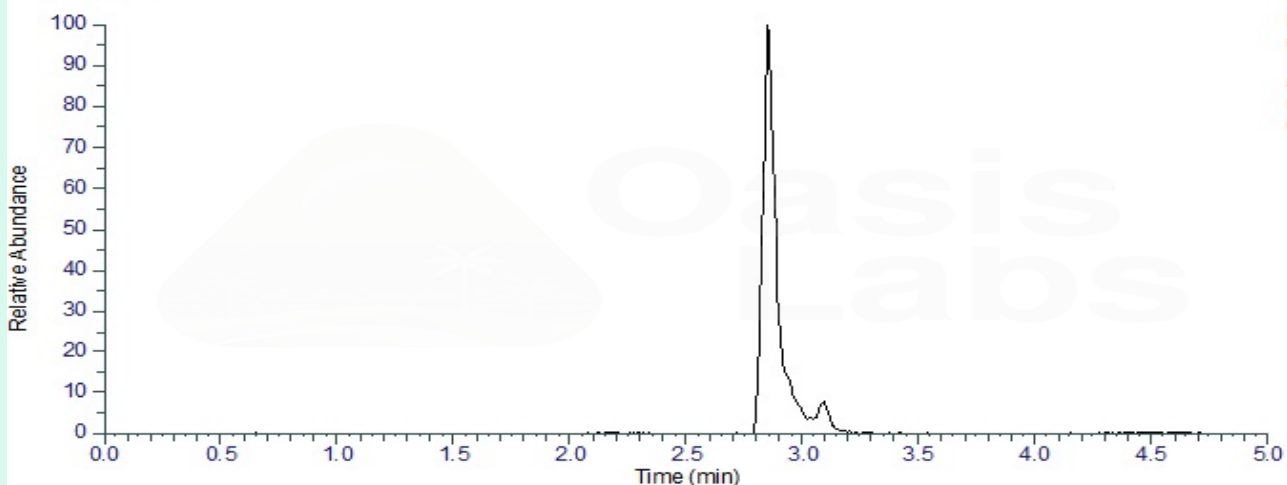
Pubchem CID: 171390338

Retatrutide | C221H342N46O68 | Pubchem CID 171390338

	Specification	Result	
Identity Test:	Retatrutide	Retatrutide	Conforms
Quantity:	30 mg ± 15%	33.3 mg	Conforms
Purity:	>98%	99.41%	Conforms

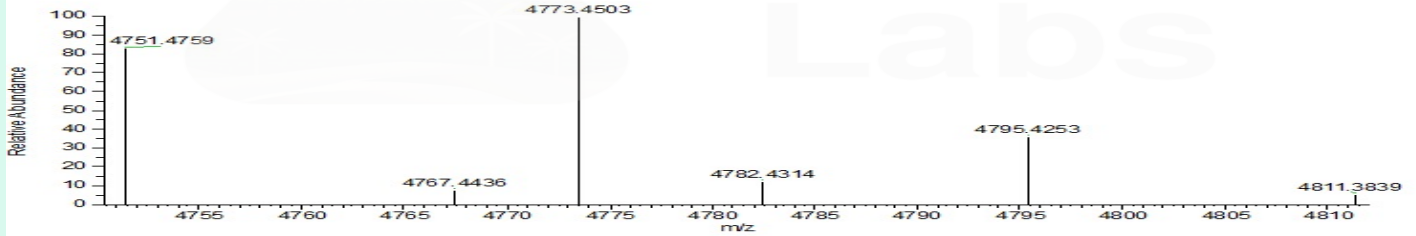
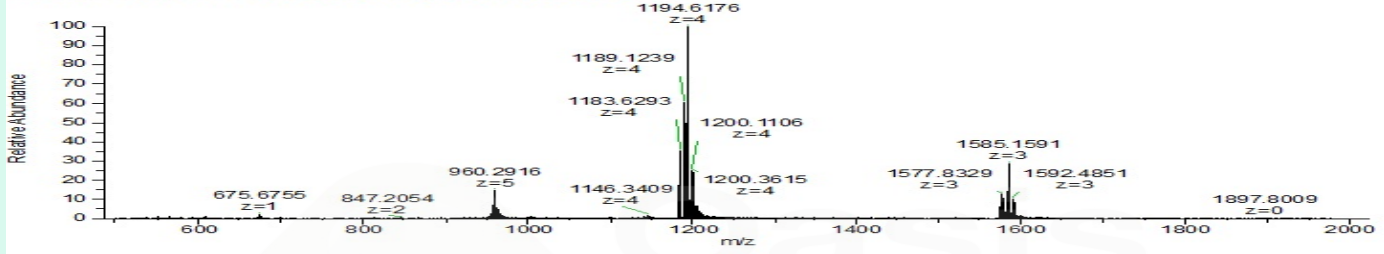
LC-MS Chromatogram: Retention Time and Peak Analysis

RT :0.00-5.00

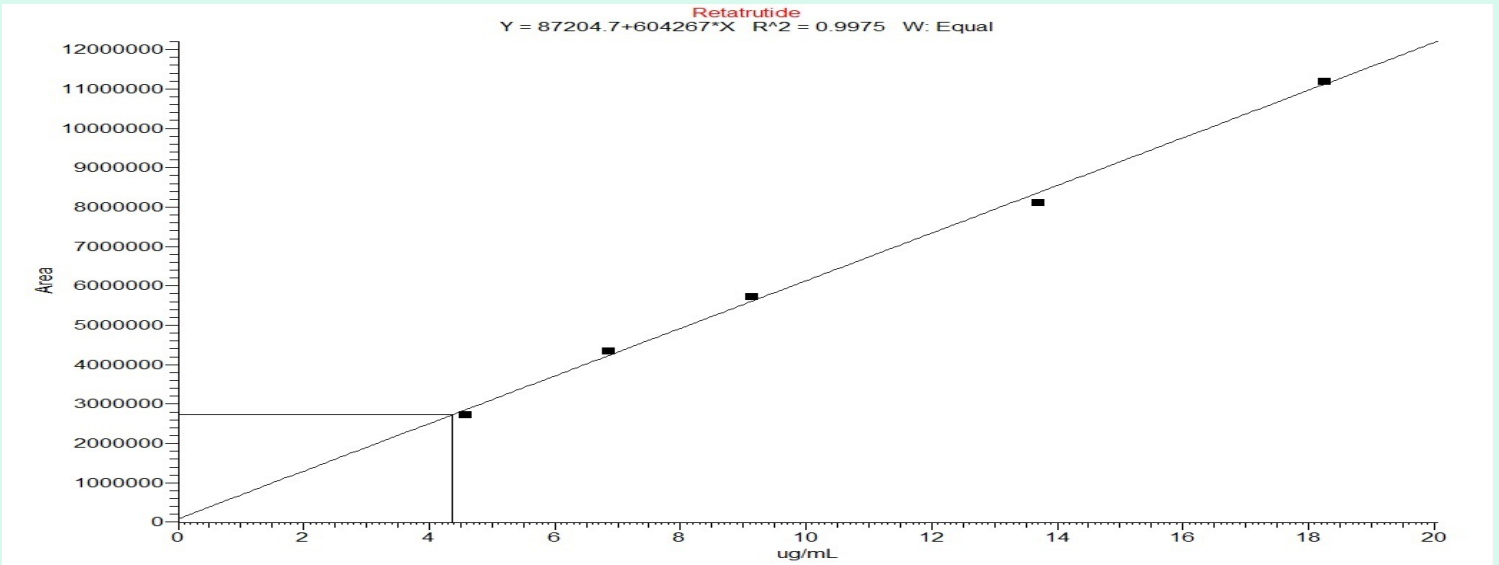


Full Scan Mass Spectrometry Analysis

OasisLabs-GLP3-Retatrutide-30mg-01 #328 RT: 2.85 AV: 1 NL: 2.38E6
T: FTMS + p ESI Full ms [500.0000-2000.0000] IIT (ms): 70.1930



Calibration Curve



Analysis Performed by

Dr. Roberto Marin
Analytical Chemist
contact@bioregen.com

COA #10769
Security Key **OASISLABS**
bioregen.com/verify



Roberto Marin