

Client: **Oasis Labs**
 support@myoasislabs.com
 www.myoasislabs.com

Sample received: **11/07/25**
 Analysis conducted: **11/13/25**

Compound:	Retatrutide	CAS:	2381089-83-2
Batch/Lot #:	253110	Formula:	C221H342N46O68
Appearance:	White lyophilized powder	Mol Wt:	4845.444 g/mol

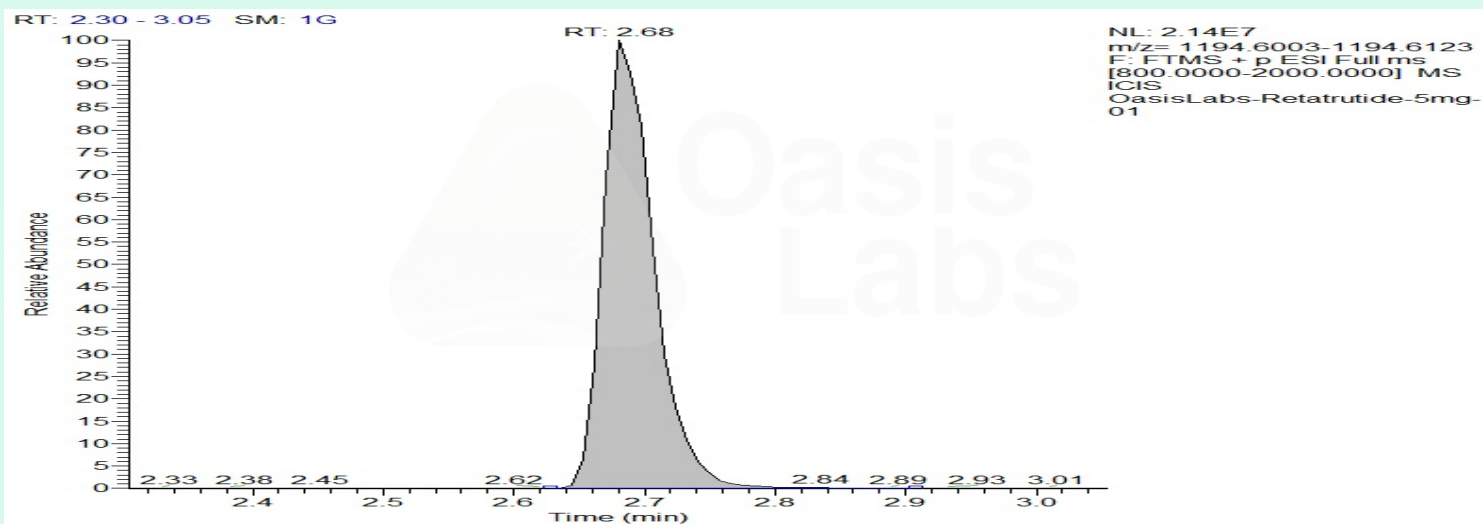
Method: Qualitative and Quantitative chemical analysis by Ultra High Performance Liquid Chromatography with Mass Spectrometry

Pubchem CID: 171390338

Retatrutide | C221H342N46O68 | Pubchem CID 171390338

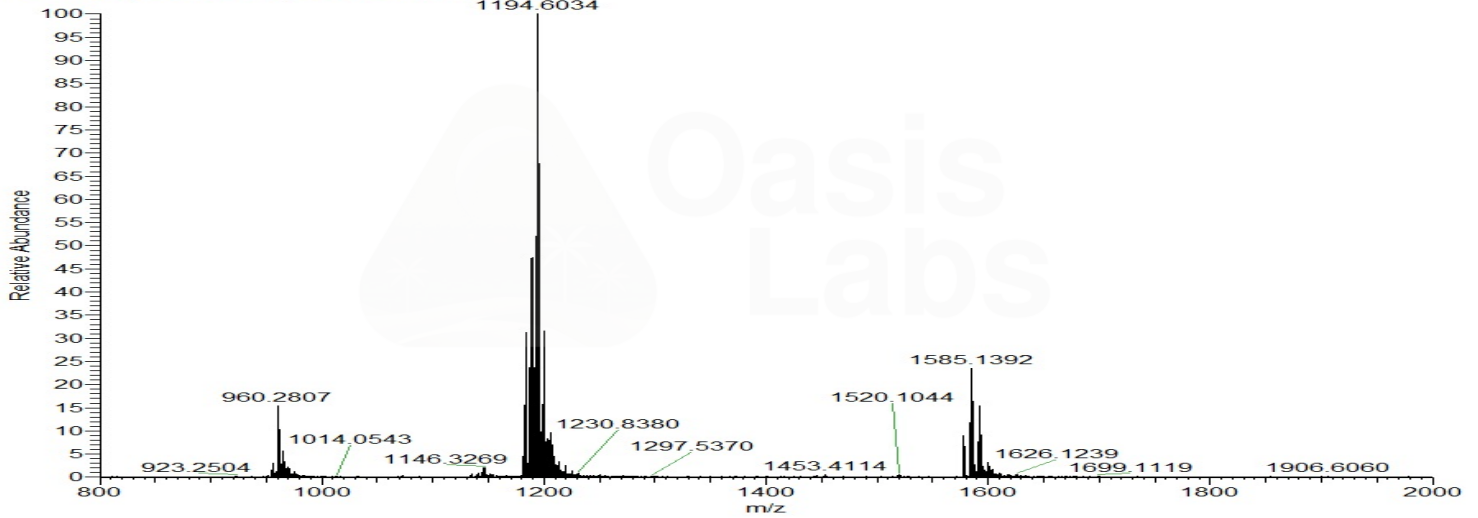
	Specification	Result	
Identity Test:	Retatrutide	Retatrutide	Conforms
Quantity:	5 mg ± 15%	5.21 mg	Conforms
Purity:	>99%	99.90%	Conforms

LC-MS Chromatogram: Retention Time and Peak Analysis

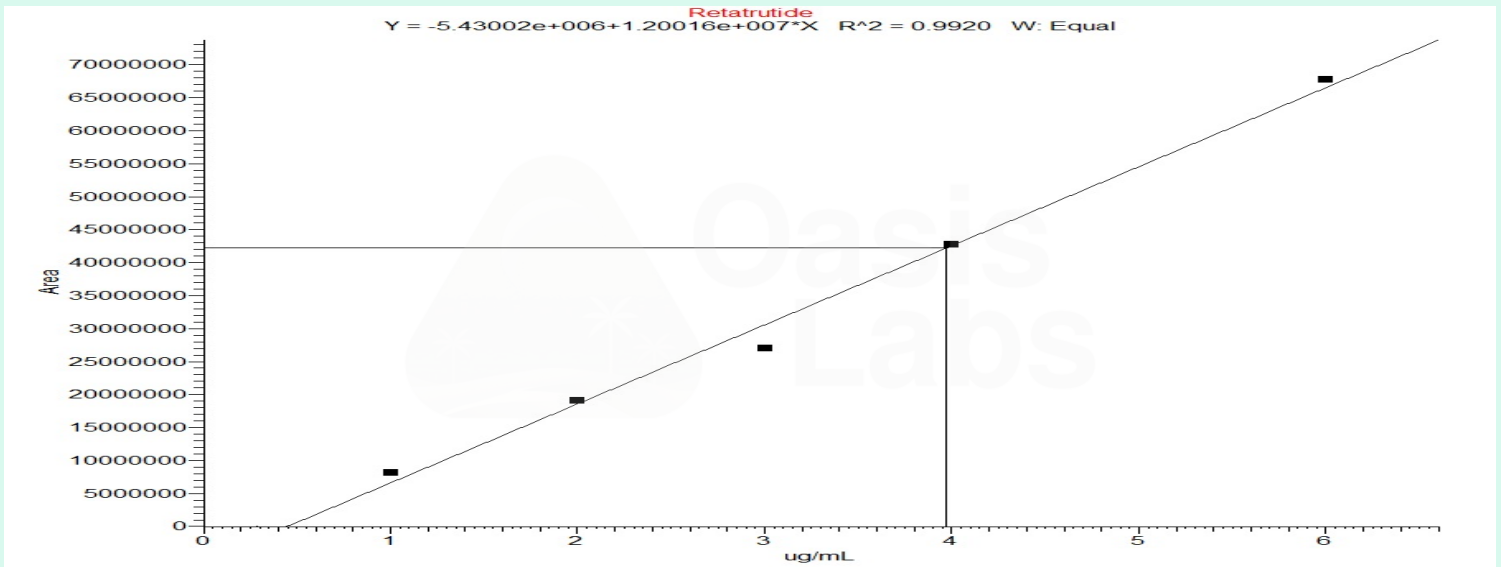


Full Scan Mass Spectrometry Analysis

OasisLabs-Retatrutide-5mg-01 #308 RT: 2.68 AV: 1 NL: 2.08E7
T: FTMS + p ESI Full ms [800.0000-2000.0000]



Calibration Curve



Analysis Performed by

Dr. Roberto Marin
Analytical Chemist
contact@bioregen.com

COA #11374
Security Key **OASISLABS**
bioregen.com/verify

Roberto Marin

