

Client: **Oasis Labs**
 support@myoasislabs.com
 www.myoasislabs.com

Sample received: **11/07/25**
 Analysis conducted: **11/13/25**

| | | | |
|--------------|--------------------------|----------|----------------|
| Compound: | Retatrutide | CAS: | 2381089-83-2 |
| Batch/Lot #: | 253110 | Formula: | C221H342N46O68 |
| Appearance: | White lyophilized powder | Mol Wt: | 4845.444 g/mol |

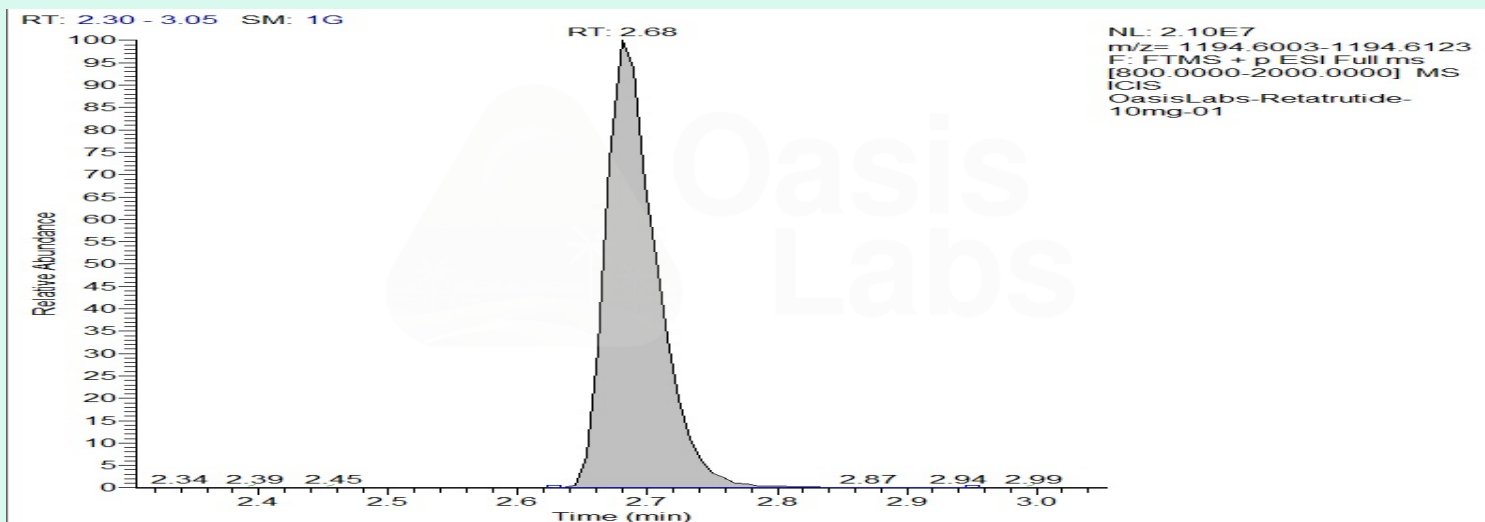
Method: Qualitative and Quantitative chemical analysis by Ultra High Performance Liquid Chromatography with Mass Spectrometry

Pubchem CID: 171390338

Retatrutide | C221H342N46O68 | Pubchem CID 171390338

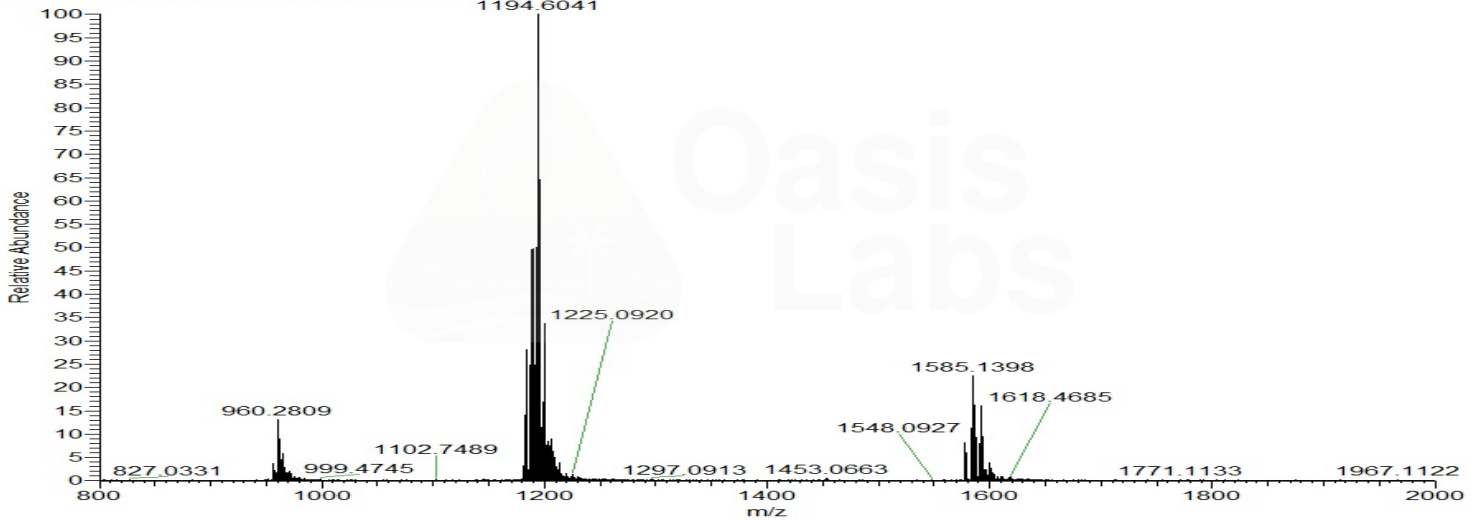
| | Specification | Result | |
|----------------|---------------|--------------------|-----------------|
| Identity Test: | Retatrutide | Retatrutide | Conforms |
| Quantity: | 10 mg ± 15% | 10.27 mg | Conforms |
| Purity: | >99% | 99.91% | Conforms |

LC-MS Chromatogram: Retention Time and Peak Analysis

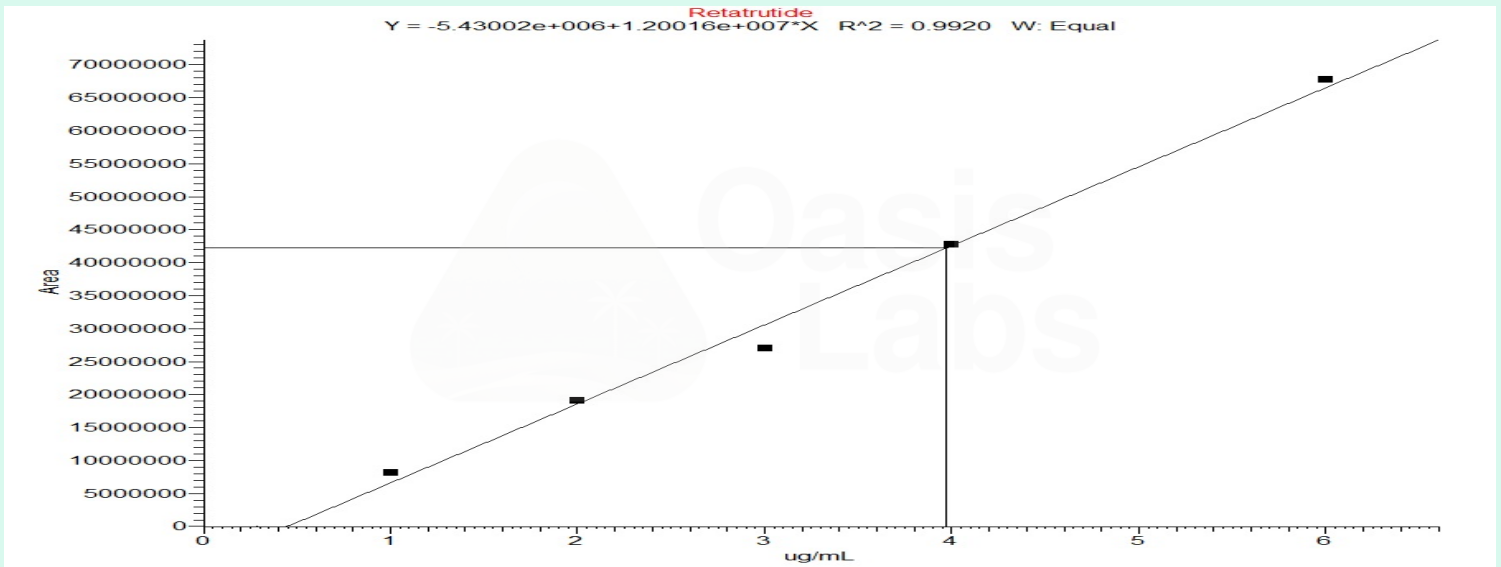


Full Scan Mass Spectrometry Analysis

OasisLabs-Retatrutide-10mg-01 #308 RT: 2.68 AV: 1 NL: 2.09E7
T: FTMS + p ESI Full ms [800.0000-2000.0000]



Calibration Curve



Analysis Performed by

Dr. Roberto Marin
Analytical Chemist
contact@bioregen.com

COA #11375
Security Key **OASISLABS**
bioregen.com/verify

Roberto Marin

