

Client: **Oasis Labs**  
 support@myoasislabs.com  
 www.myoasislabs.com

Sample received: **11/07/25**  
 Analysis conducted: **11/17/25**

Compound:	Epithalon (Epitalon)	CAS:	307297-39-8
Batch/Lot #:	253110	Formula:	C14H22N4O9
Appearance:	White lyophilized powder	Mol Wt:	390.349 g/mol

**Method:** Qualitative and Quantitative chemical analysis by Ultra High Performance Liquid Chromatography with Mass Spectrometry

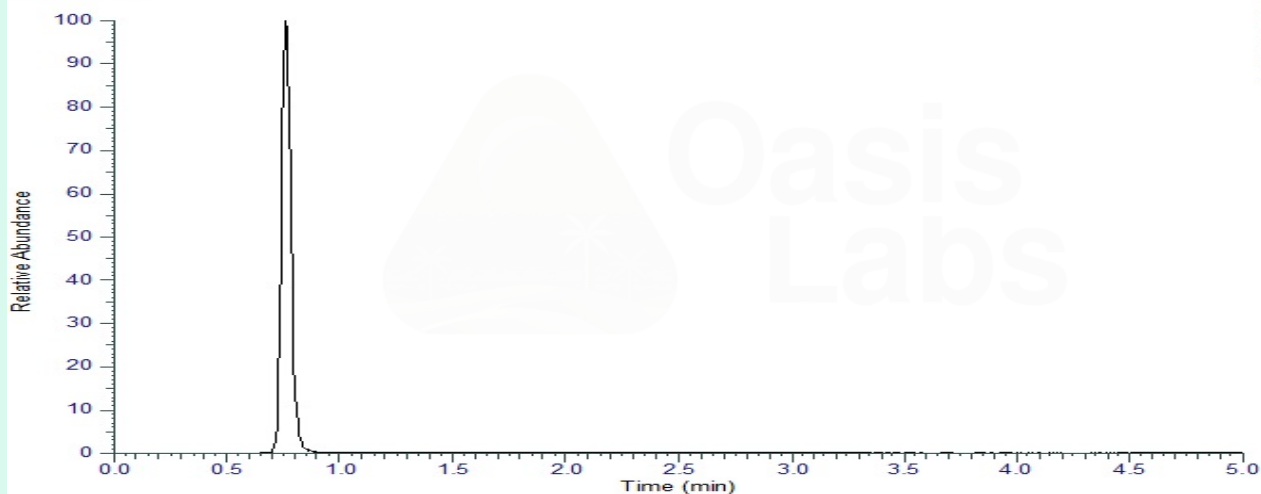
**Pubchem CID:** 219042

[Epithalon | C14H22N4O9 | CID 219042](#)

	Specification	Result	
Identity Test:	Epithalon	<b>Epithalon</b>	<b>Conforms</b>
Quantity:	50 mg ± 15%	47.35 mg	<b>Conforms</b>
Purity:	>99%	<b>99.82%</b>	<b>Conforms</b>

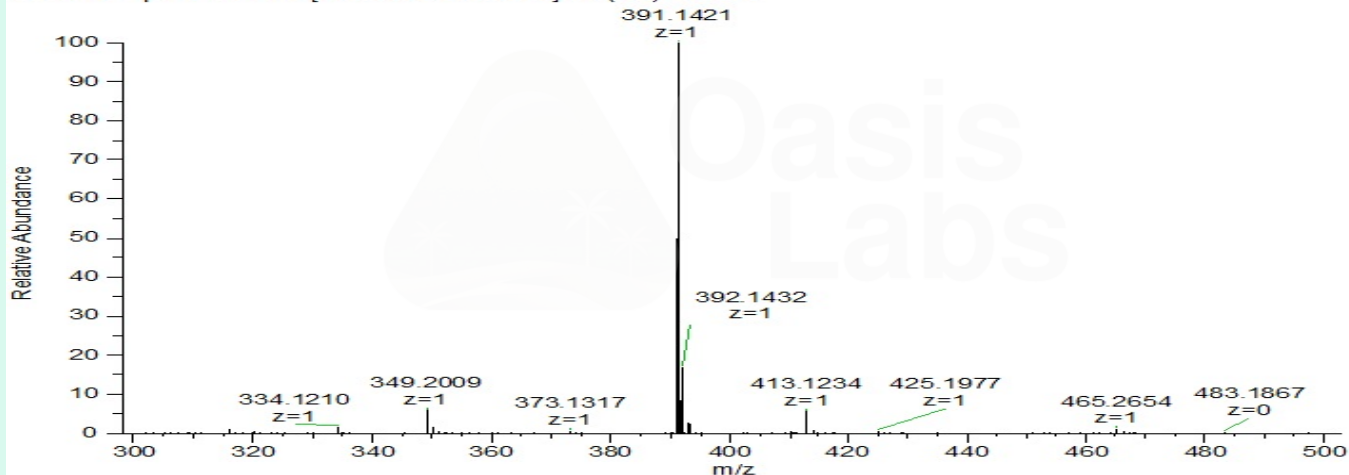
### LC-MS Chromatogram: Retention Time and Peak Analysis

RT : 0.00-5.01



# Full Scan Mass Spectrometry Analysis

OL-Epithalon-50mg-01 #135 RT: 0.76 AV: 1 NL: 5.41E8  
T: FTMS + p ESI Full ms [300.0000-500.0000] IIT (ms): 2.8940



## Analysis Performed by

Dr. Roberto Marin  
Analytical Chemist  
contact@bioregen.com

COA #11407  
Security Key **OASISLABS**  
bioregen.com/verify

*Roberto Marin*

