

**Client: Oasis Labs**  
 support@myoasislabs.com  
 www.myoasislabs.com

 Sample received: **11/07/25**  
 Analysis conducted: **11/19/25**

Compound:	Retatrutide	CAS:	2381089-83-2
Batch/Lot #:	253110	Formula:	C221H342N46O68
Appearance:	White lyophilized powder	Mol Wt:	4845.444 g/mol

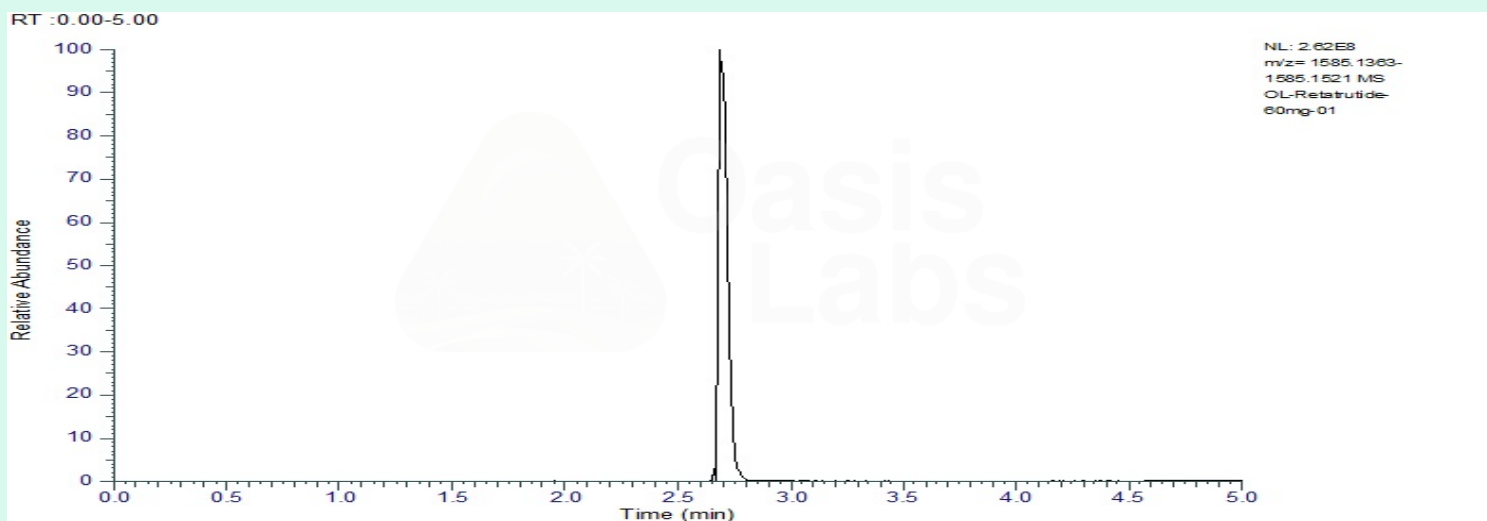
**Method:** Qualitative and Quantitative chemical analysis by Ultra High Performance Liquid Chromatography with Mass Spectrometry

**Pubchem CID:** 171390338

Retatrutide | C221H342N46O68 | Pubchem CID 171390338

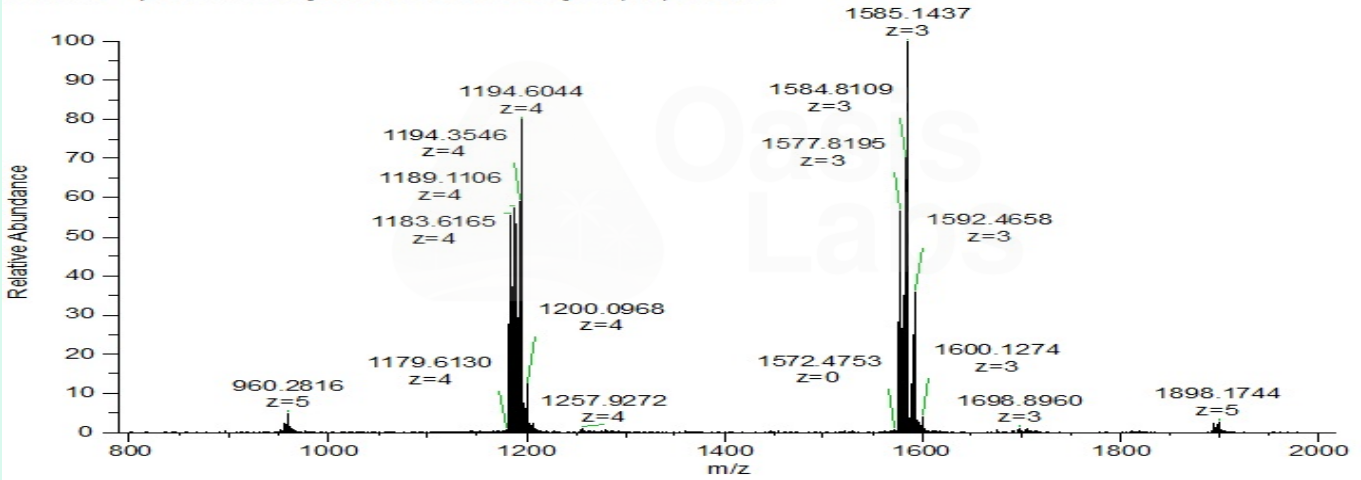
	Specification	Result	
Identity Test:	Retatrutide	<b>Retatrutide</b>	<b>Conforms</b>
Quantity:	60 mg ± 15%	64.82 mg	<b>Conforms</b>
Purity:	>99%	<b>99.88%</b>	<b>Conforms</b>

### LC-MS Chromatogram: Retention Time and Peak Analysis



# Full Scan Mass Spectrometry Analysis

OL-Retatrutide-60mg-01 #309 RT: 2.69 AV: 1 NL: 2.48E8  
T: FTMS + p ESI Full ms [800.0000-2000.0000] IIT (ms): 0.3840



## Analysis Performed by

Dr. Roberto Marin  
Analytical Chemist  
contact@bioregen.com

COA #11422  
Security Key **OASISLABS**  
bioregen.com/verify

*Roberto Marin*

