

**Client: Oasis Labs**  
 support@myoasislabs.com  
 www.myoasislabs.com

 Sample received: **11/07/25**  
 Analysis conducted: **11/19/25**

Compound:	PT-141	CAS:	189691-06-3
Batch/Lot #:	253110	Formula:	C50H68N14O10
Appearance:	White lyophilized powder	Mol Wt:	1025.182 g/mol

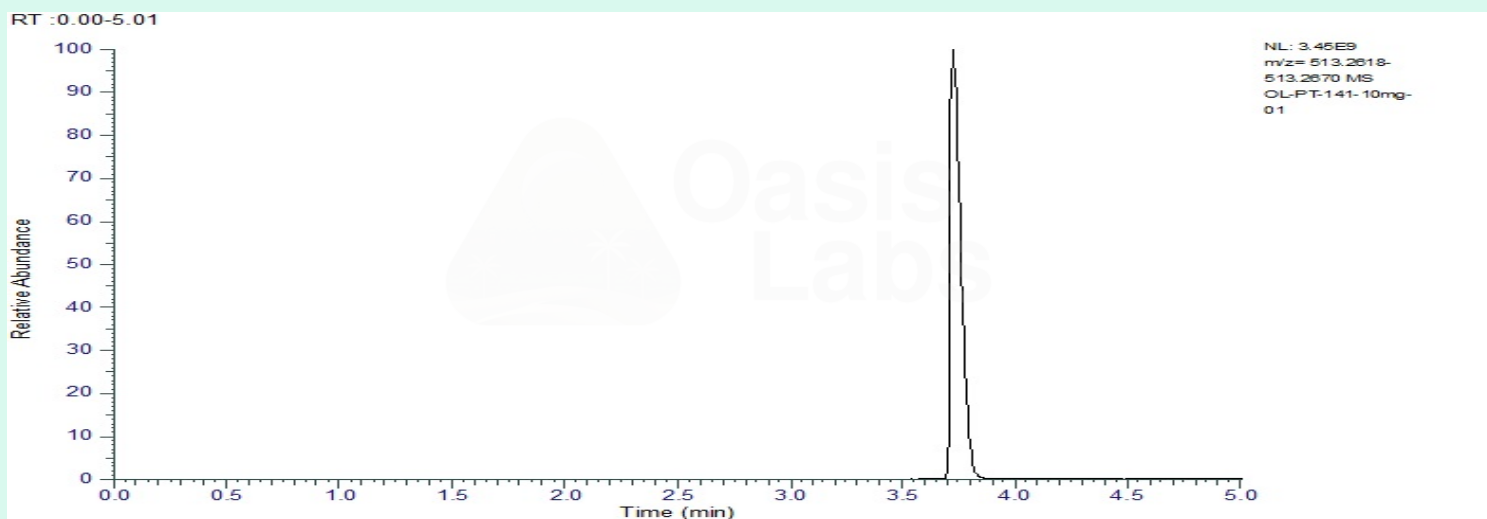
**Method:** Qualitative and Quantitative chemical analysis by Ultra High Performance Liquid Chromatography with Mass Spectrometry

**Pubchem CID:** 9941379

PT-141 | C50H68N14O10 | CID 9941379

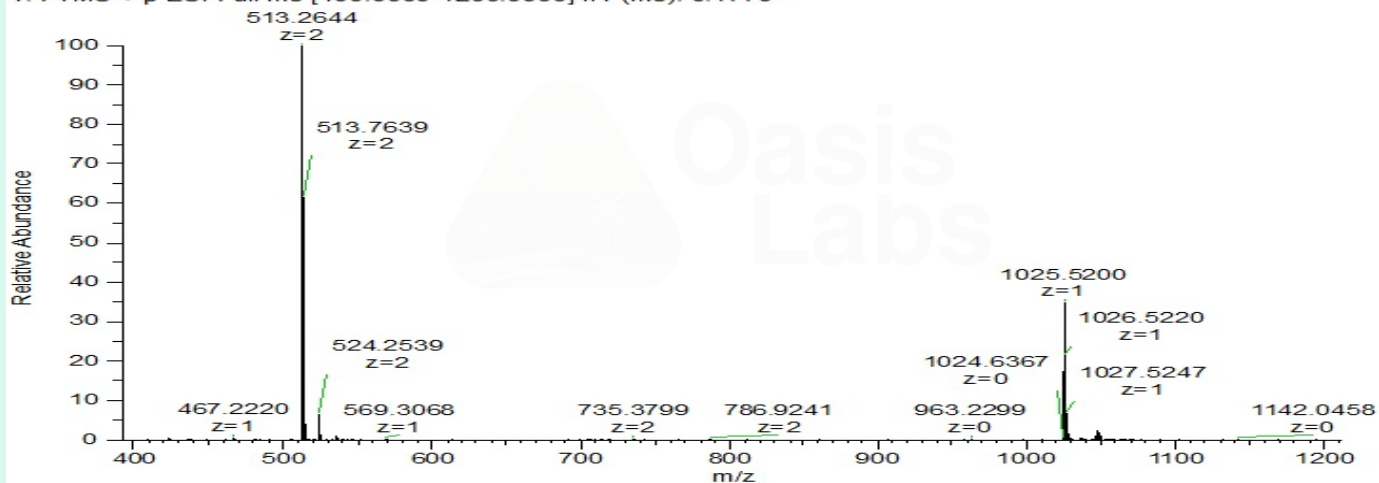
	Specification	Result	
Identity Test:	PT-141	<b>PT-141</b>	<b>Conforms</b>
Quantity:	10 mg ± 15%	10.78 mg	<b>Conforms</b>
Purity:	>99%	<b>99.84%</b>	<b>Conforms</b>

### LC-MS Chromatogram: Retention Time and Peak Analysis



# Full Scan Mass Spectrometry Analysis

OL-PT-141-10mg-01 #461 RT: 3.73 AV: 1 NL: 3.28E9  
T: FTMS + p ESI Full ms [400.0000-1200.0000] IIT (ms): 0.1770



## Analysis Performed by

Dr. Roberto Marin  
Analytical Chemist  
contact@bioregen.com

COA #11428  
Security Key **OASISLABS**  
bioregen.com/verify



*Roberto Marin*