

Client: Oasis Labs
 support@myoasislabs.com
 www.myoasislabs.com

 Sample received: **11/07/25**
 Analysis conducted: **11/19/25**

Compound:	KLOW Blend	CAS:	137525-51-0
Batch/Lot #:	253110	Formula:	C62H98N16O22
Appearance:	Blue lyophilized powder	Mol Wt:	1419.5 g/mol

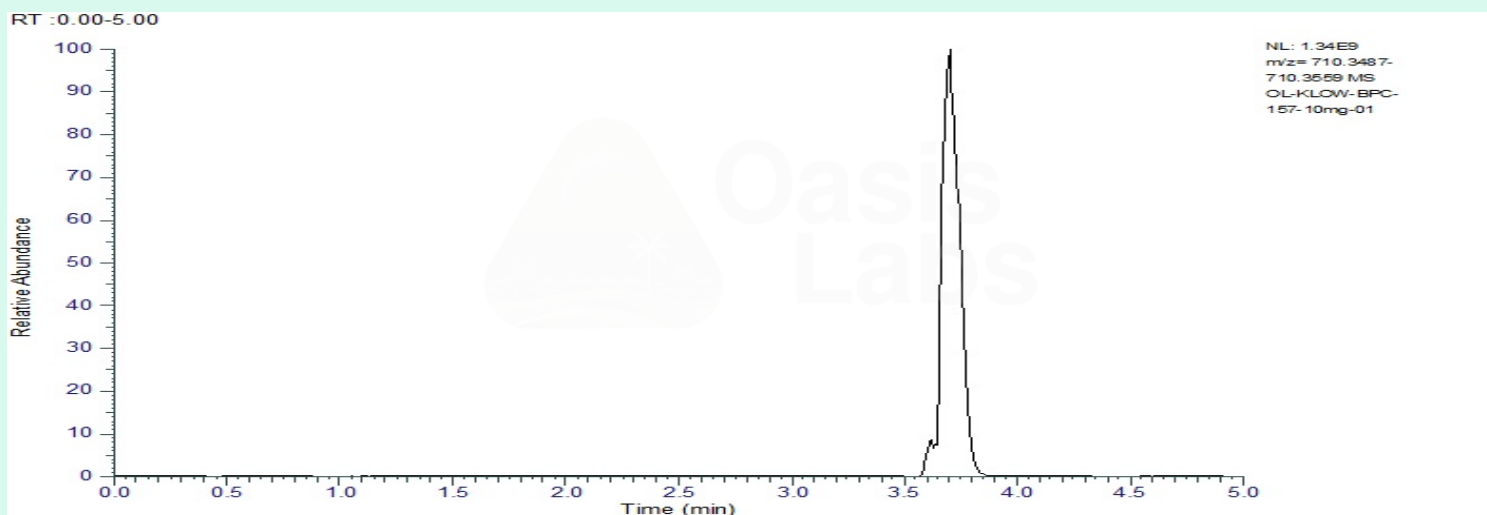
Method: Qualitative and Quantitative chemical analysis by Ultra High Performance Liquid Chromatography with Mass Spectrometry

Pubchem CID: 9941957

[BPC 157](#) | [C62H98N16O22](#) | [CID 9941957](#) - PubChem

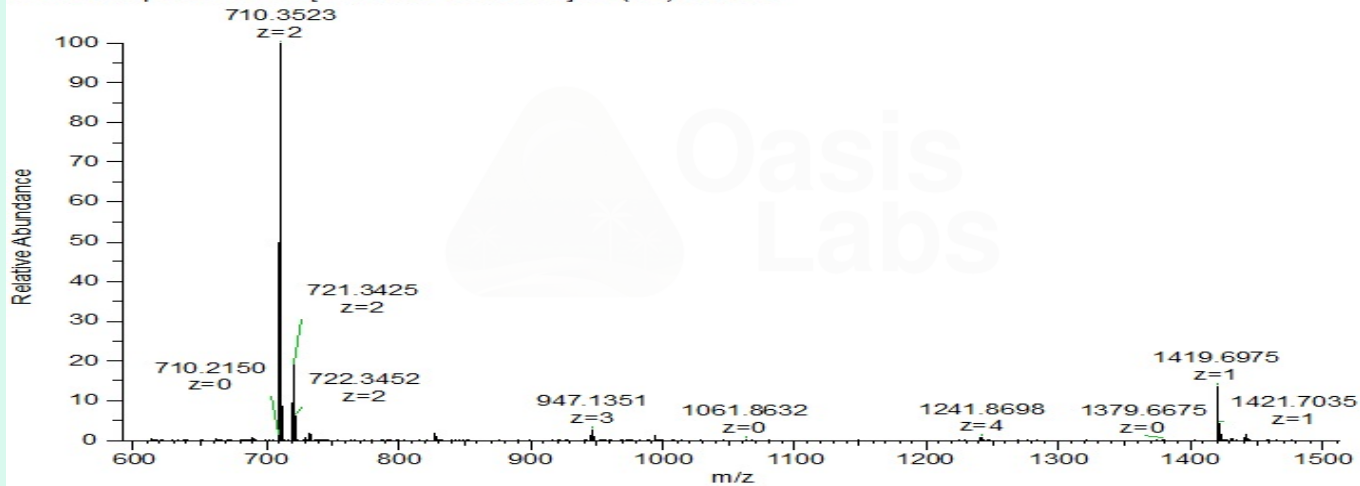
	Specification	Result	
Identity Test:	BPC 157	BPC 157	Conforms
Quantity:	10 mg ± 15%	11.84 mg	Over-Conforming
Purity:	>99%	99.89%	Conforms

LC-MS Chromatogram: Retention Time and Peak Analysis



Full Scan Mass Spectrometry Analysis

OL-KLOW-BPC-157-10mg-01 #425 RT: 3.70 AV: 1 NL: 1.28E9
T: FTMS + p ESI Full ms [600.0000-1500.0000] IIT (ms): 0.0680



Analysis Performed by

Dr. Roberto Marin
Analytical Chemist
contact@bioregen.com

COA #11434
Security Key **OASISLABS**
bioregen.com/verify



Roberto Marin

Client: Oasis Labs
support@myoasislabs.com
www.myoasislabs.com

Sample received: **11/07/25**
Analysis conducted: **11/19/25**

Compound:	KLOW Blend	CAS:	885340-08-9
Batch/Lot #:	253110	Formula:	C38H68N10O14
Appearance:	Blue lyophilized powder	Mol Wt:	4963 g/mol

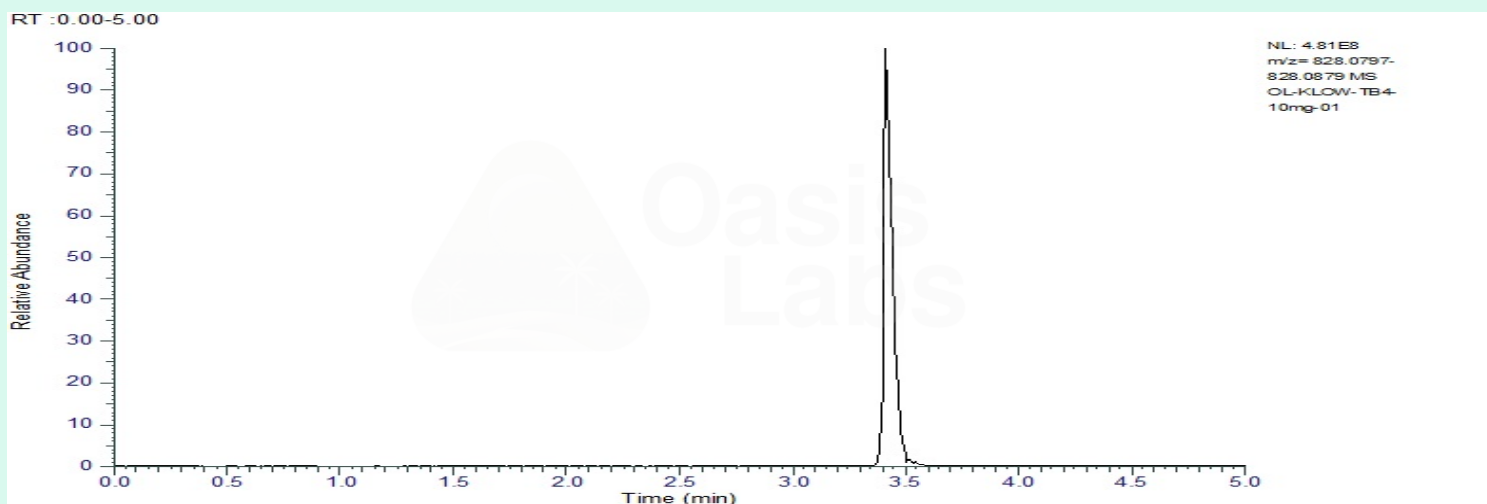
Method: Qualitative and Quantitative chemical analysis by Ultra High Performance Liquid Chromatography with Mass Spectrometry

Pubchem CID: 62707662

TB4 | C212H350N56O78S | 45382195

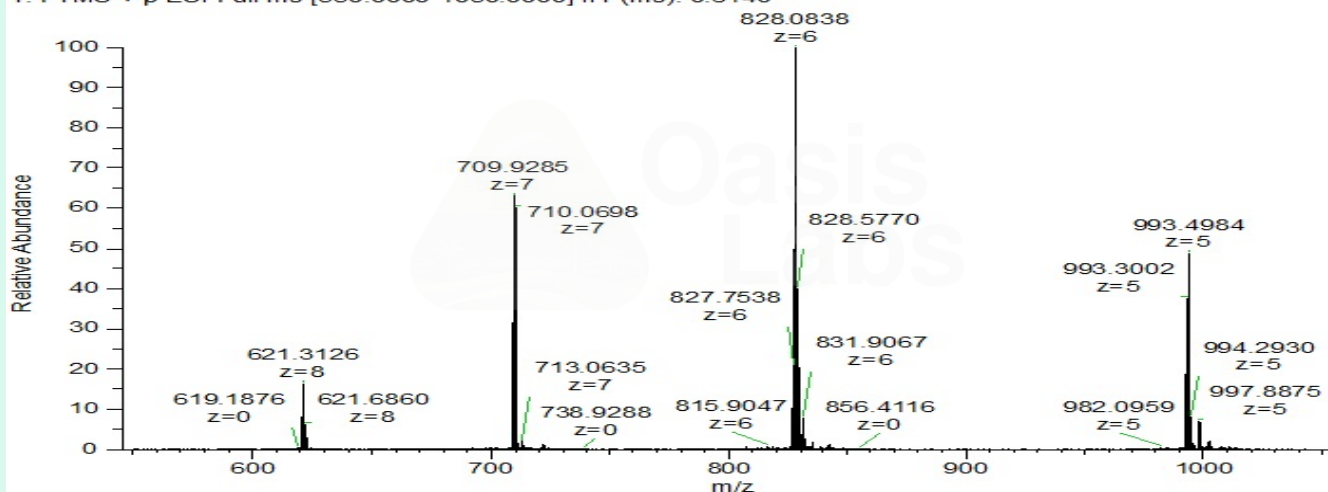
	Specification	Result	
Identity Test:	Thymosin Beta 4	Thymosin Beta 4	Conforms
Quantity:	10 mg ± 15%	9.72 mg	Conforms
Purity:	>99%	99.89%	Conforms

LC-MS Chromatogram: Retention Time and Peak Analysis



Full Scan Mass Spectrometry Analysis

OL-KLOW-TB4-10mg-01 #392 RT: 3.42 AV: 1 NL: 4.69E8
T: FTMS + p ESI Full ms [550.0000-1050.0000] IIT (ms): 0.6140



Analysis Performed by

Dr. Roberto Marin
Analytical Chemist
contact@bioregen.com

COA #11434
Security Key **OASISLABS**
bioregen.com/verify



Roberto Marin

Client: Oasis Labs
 support@myoasislabs.com
 www.myoasislabs.com

 Sample received: **11/07/25**
 Analysis conducted: **11/19/25**

Compound:	KLOW Blend	CAS:	49557-75-7
Batch/Lot #:	253110	Formula:	C14H24N6O4
Appearance:	Blue lyophilized powder	Mol Wt:	340.38 g/mol

Method: Qualitative and Quantitative chemical analysis by Ultra High Performance Liquid Chromatography with Mass Spectrometry

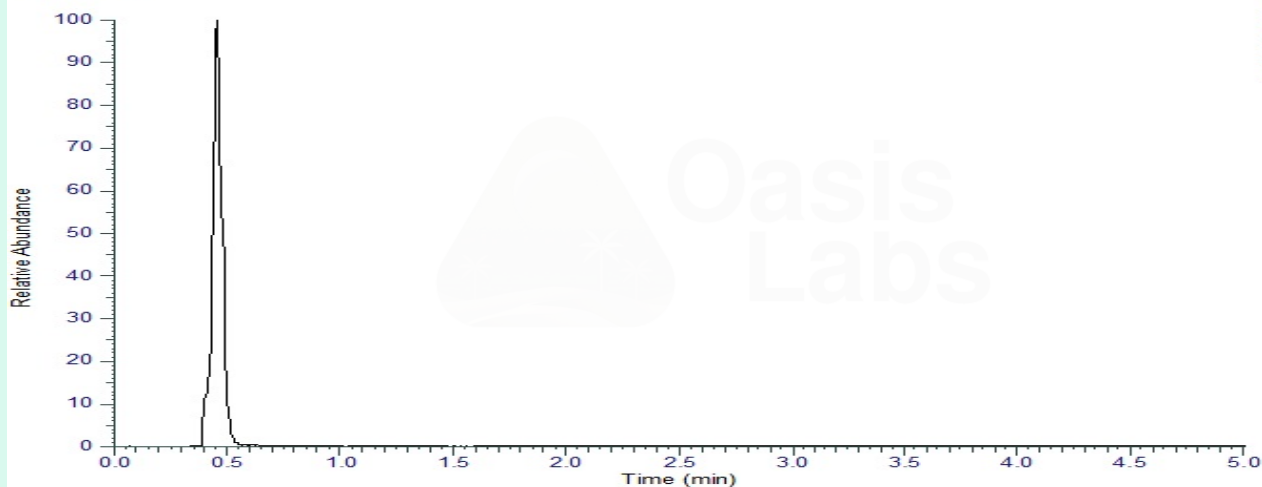
Pubchem CID: 342538

[GHK-Cu](#) | [C14H24N6O4Cu](#) | [CID 342538](#)

	Specification	Result	
Identity Test:	GHK-Cu	GHK-Cu	Conforms
Quantity:	50 mg ± 15%	52.83 mg	Conforms
Purity:	>99%	99.89%	Conforms

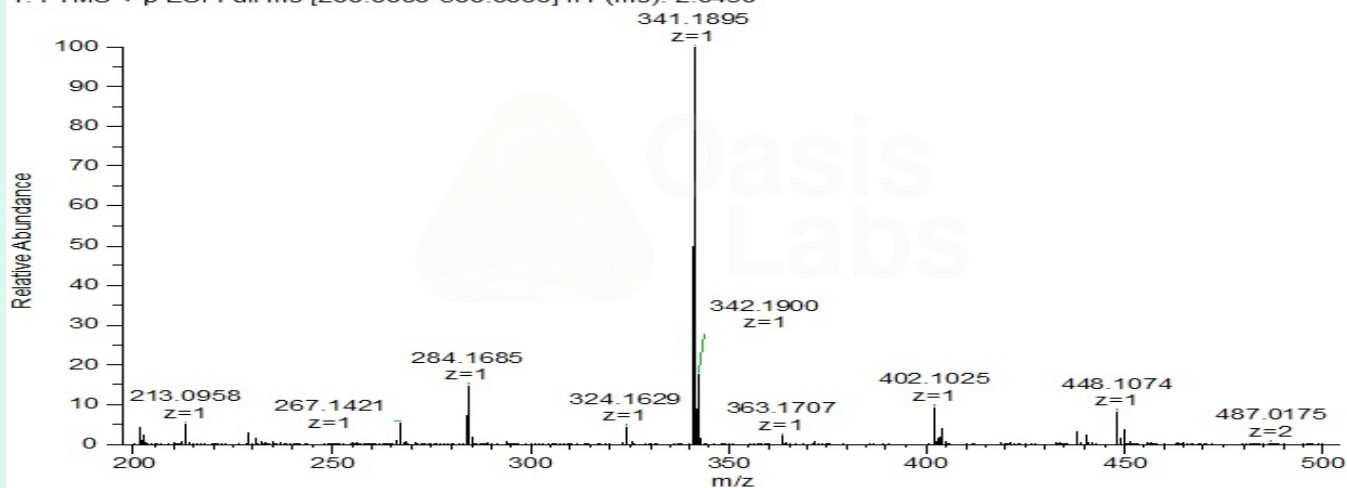
LC-MS Chromatogram: Retention Time and Peak Analysis

RT : 0.00-5.01


 NL: 6.54E8
 m/z= 341.1878-
 341.1912 MS
 OL-KLOW-GHK-
 Cu-50mg-01


Full Scan Mass Spectrometry Analysis

OL-KLOW-GHK-Cu-50mg-01 #59 RT: 0.45 AV: 1 NL: 6.10E8
T: FTMS + p ESI Full ms [200.0000-500.0000] IIT (ms): 2.0490



Analysis Performed by

Dr. Roberto Marin
Analytical Chemist
contact@bioregen.com

COA #11434
Security Key **OASISLABS**
bioregen.com/verify



Roberto Marin

Client: Oasis Labs
 support@myoasislabs.com
 www.myoasislabs.com

 Sample received: **11/07/25**
 Analysis conducted: **11/19/25**

Compound:	KLOW Blend	CAS:	67727-97-3
Batch/Lot #:	253110	Formula:	C16H30N4O4
Appearance:	Blue lyophilized powder	Mol Wt:	342.43 g/mol

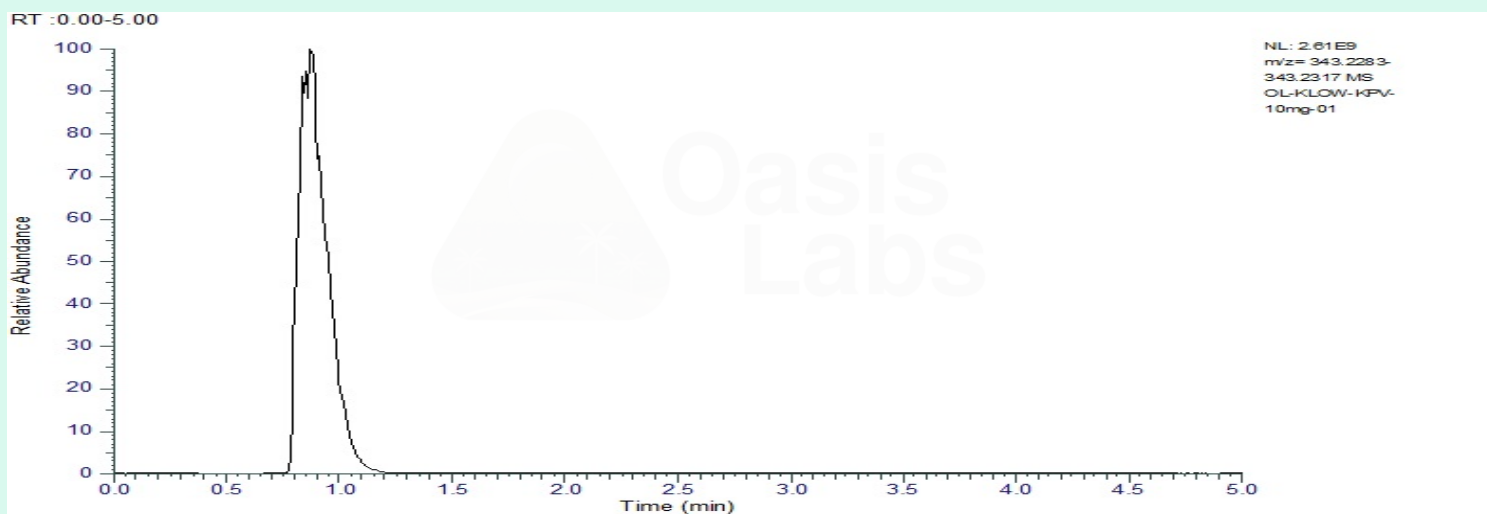
Method: Qualitative and Quantitative chemical analysis by Ultra High Performance Liquid Chromatography with Mass Spectrometry

Pubchem CID: 125672

KPV | C16H30N4O4 | CID 125672

	Specification	Result	
Identity Test:	KPV	KPV	Conforms
Quantity:	10 mg ± 15%	8.56 mg	Conforms
Purity:	>99%	99.89%	Conforms

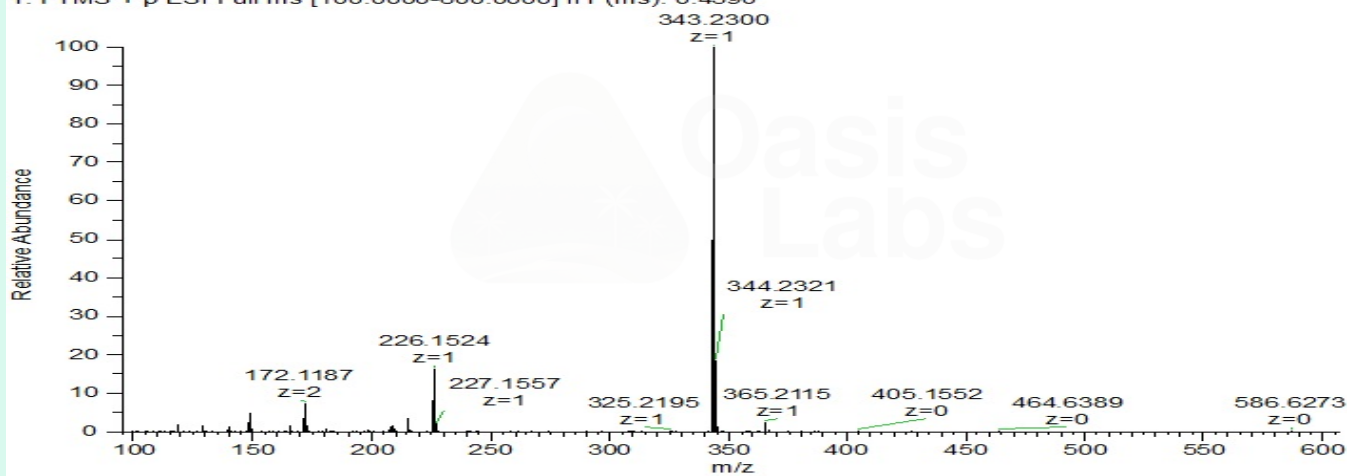
LC-MS Chromatogram: Retention Time and Peak Analysis



Full Scan Mass Spectrometry Analysis

OL-KLOW-KPV-10mg-01 #99 RT: 0.86 AV: 1 NL: 2.27E9

T: FTMS + p ESI Full ms [100.0000-600.0000] IIT (ms): 0.4390



Analysis Performed by

Dr. Roberto Marin
Analytical Chemist
contact@bioregen.com

COA #11434
Security Key **OASISLABS**
bioregen.com/verify



Roberto Marin